



# THE TIN CAN SOCIETY



PETER WARREN • FRANCESCO MOBILI • CHRIS CHUCKRY

1 OF 9  
SEPT \$3.99  
U.S.



Whenever someone dies in a terrible way, their friends always say the same thing.







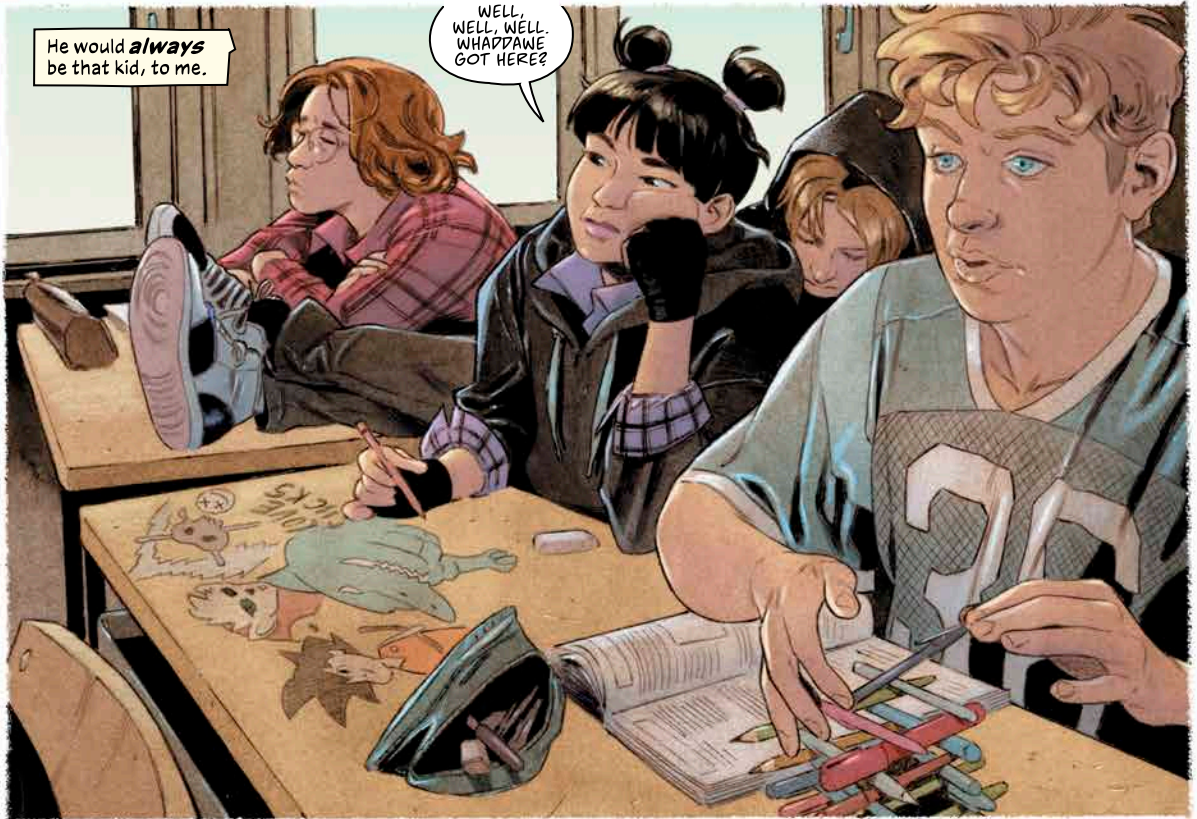
At least that first day.



No matter what happened.

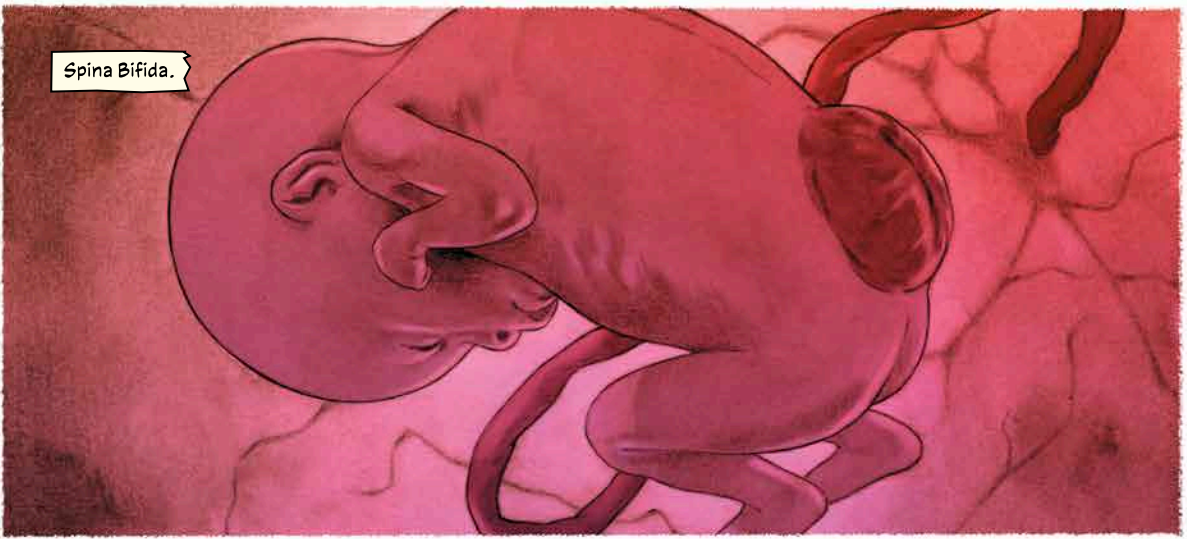
No matter who he became.

*What* he became.

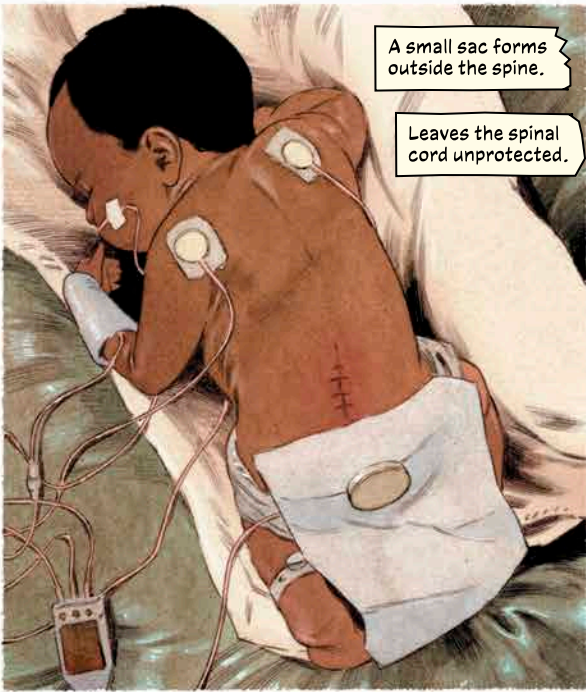


He would *always* be that kid, to me.

WELL, WELL, WELL, WHADDANE GOT HERE?



Spina Bifida.



A small sac forms outside the spine.

Leaves the spinal cord unprotected.



Vulnerable.



He could never know why they gave him up, not *really*.



But he knew.



Pam and Edward Moore were Christian Scientists.

Which just means they didn't much believe in science.

Or medicine.



It's one Hell of an irony.

May His spirit fill your home with Joy this Christmas season

The greatest scientific mind of a generation came from a family that would barely take him to the doctor.

Love,  
the Moores



Guess it makes sense.

It made him ambitious.

And it made him angry.