

OKAY, I HAVE TO ADMIT THAT WAS PRETTY CLEVER. BUT THE GORMAN-SAMPSON IS A GLOBAL NETWORK, AND JUST PUSHING THE WRONG BUTTON MEANS I CAN CREATE A DISASTER ANYWHERE ON THE PLANET.

THESE SATELLITES HAVE KEPT CLIMATE-CHANGE IN CHECK FOR THE LAST FIFTEEN YEARS, BUT OUR BEST FRIEND CAN BE OUR WORST ENEMY UNDER THE RIGHT CONDITIONS.

HOW ABOUT A LITTLE TSUNAMI IN NEW YORK CITY?

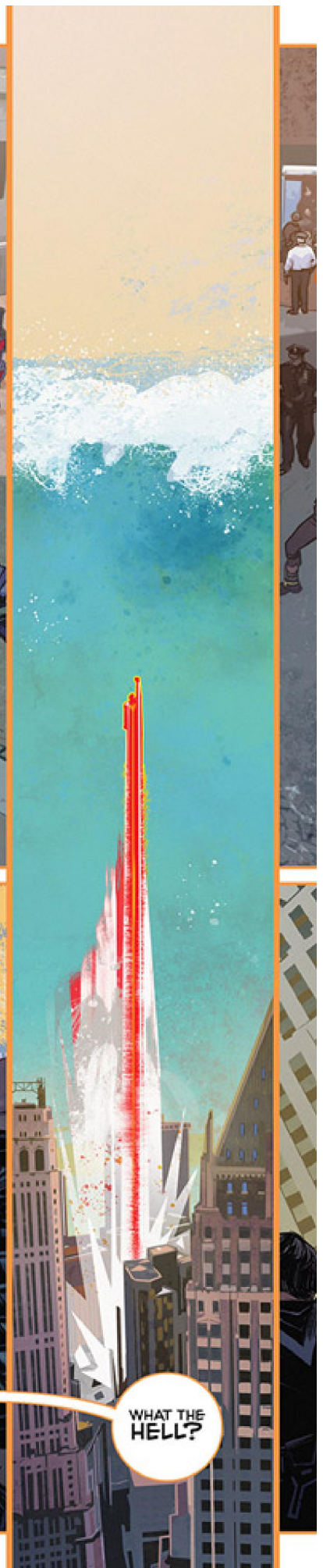


MY GOD.

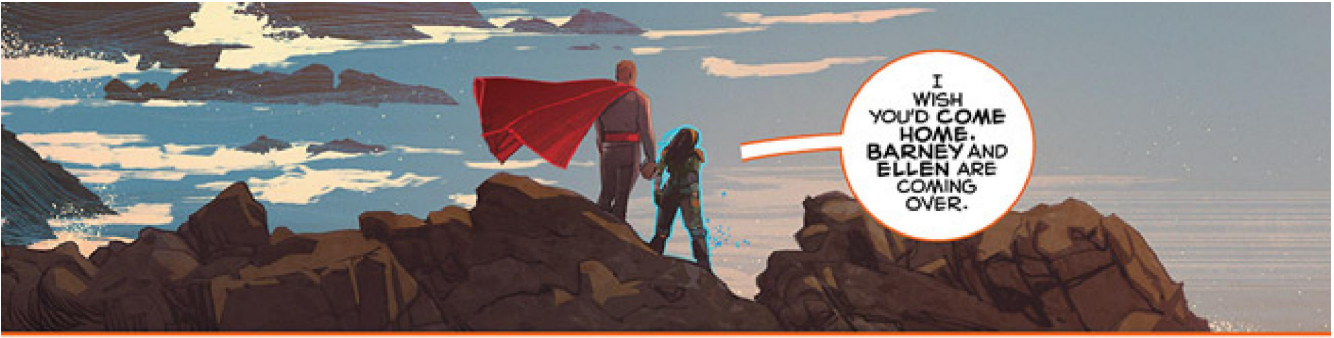


"DO YOU SERIOUSLY THINK YOU CAN REACH THE OTHER SIDE OF THE PLANET IN TIME?"









I WISH YOU'D COME HOME. BARNEY AND ELLEN ARE COMING OVER.

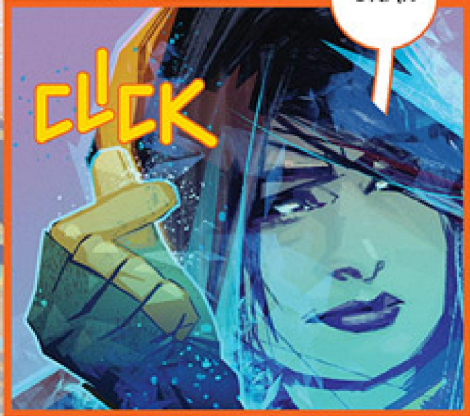


I CAN'T. I'VE TOO MUCH TO DO.

I HAVE TO PATROL THE WORLD AGAIN, AND THEN I'VE GOT AN EXPERIMENT I WANT TO TRY.

I'M GOING TO STAY IN THE WORKSHOP TONIGHT, BUT I'LL BE BACK IN THE MORNING WITH AN INTERNATIONAL BREAKFAST FOR EVERYONE.

OKAY.



YOU KNOW WHERE WE ARE IF YOU CHANGE YOUR MIND.