

Secret Service
Headquarters,
Los Angeles
Branch.



WELCOME
TO YOUR FIRST
DAY AT THE
SECRET
SERVICE.



THE CASE
WE'RE ABOUT TO
GIVE YOU? IT'S THE
OLDEST ACTIVE CASE
IN EXISTENCE. IT IS
A LEGENDARY
CASE.

THE CASE
YOU GIVE TO NEW
AGENTS AS SOME
KIND OF MAZING
RITUAL. THE CASE
THAT CAN'T BE
SOLVED.



MARTIN, LISTEN TO ME,
I DON'T CARE WHAT YOU'VE
HEARD ABOUT THIS CASE.
WHAT YOU NEED TO
KNOW?

THIS IS A CASE THAT
HUNDREDS OF AGENTS
HAVE RUN INTO AND
CRASHED AND
BURNED. EVERY
AGENT.



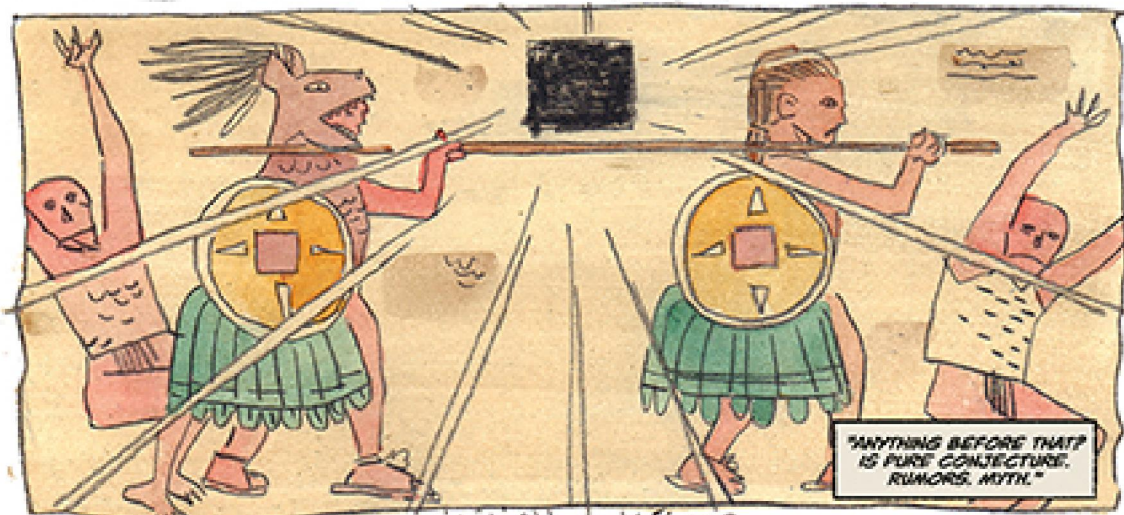
WE ARE CLOSE. REALLY
CLOSE. CLOSER THAN
ANYONE HAS EVER BEEN.
AND WE HAVE THREE
WEEKS LEFT.

AND THEN IT
WILL BE YOUR
PROBLEM.



BUT I'M
HERE TO TELL
YOU THIS. WE
ARE GOING TO
SOLVE IT.

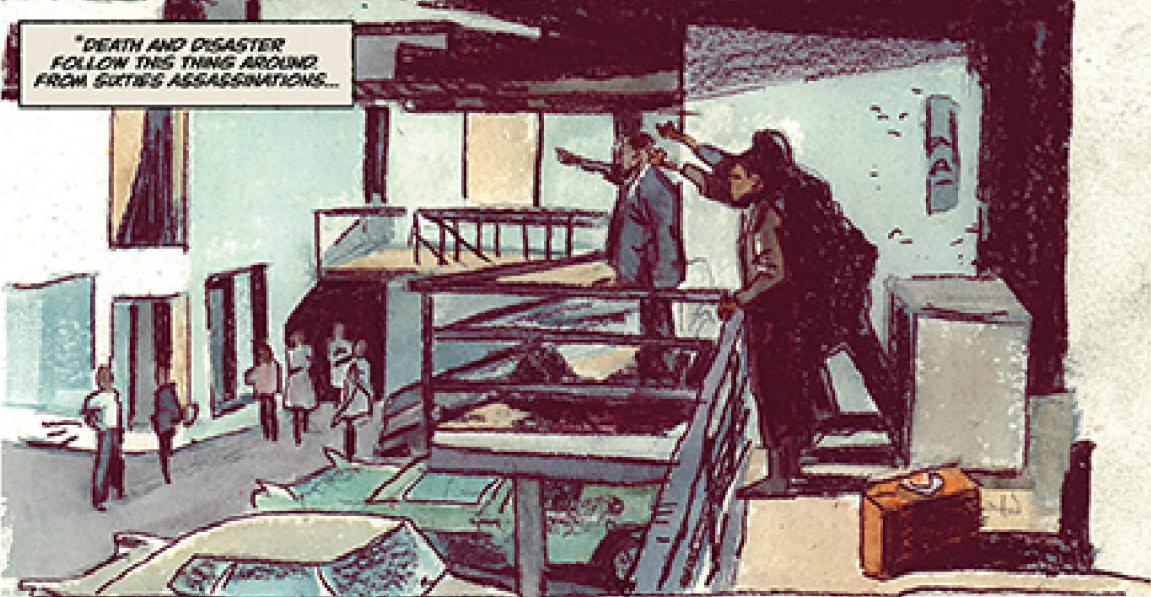




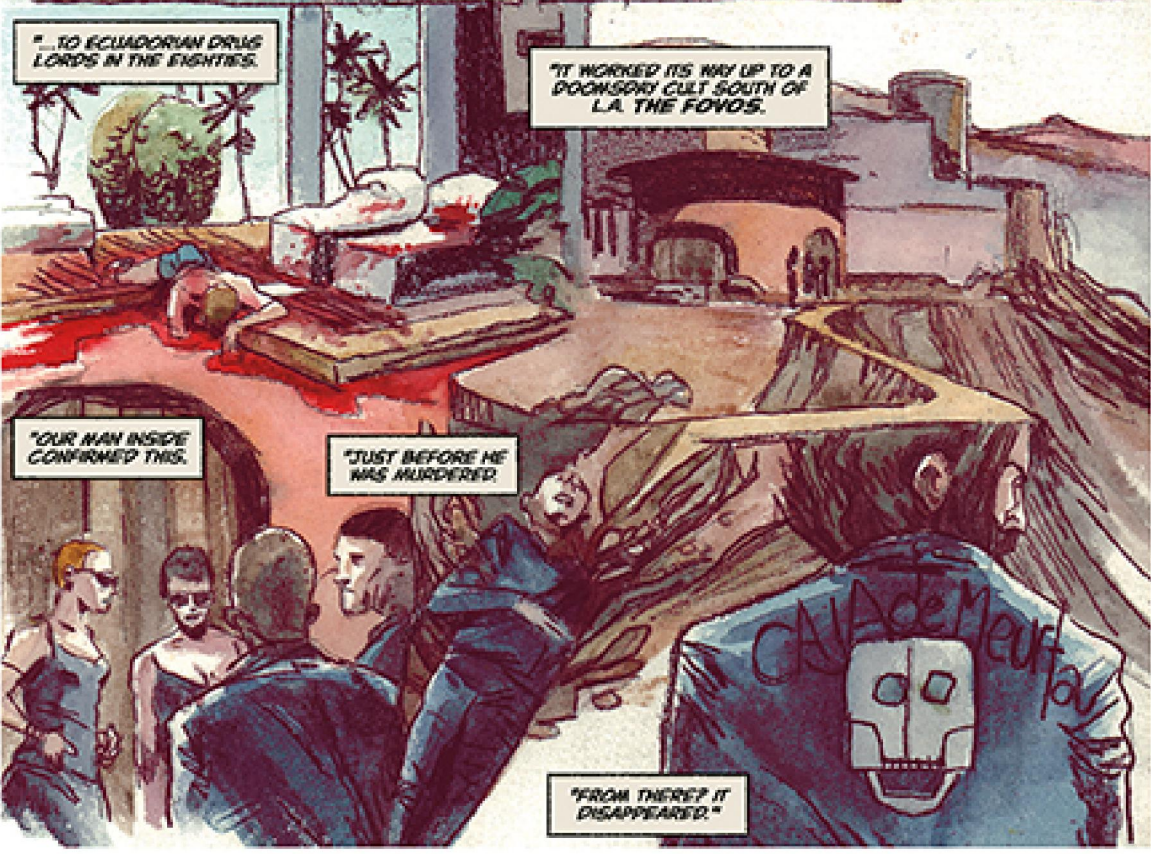


"THE JAPANESE TRANSFERRED IT TO THE NAZIS."

"IT GOT LOST IN POLAND."



"DEATH AND DISASTER FOLLOW THIS THING AROUND FROM SIXTIES ASSASSINATIONS..."



"... TO ECUADORIAN DRUG LORDS IN THE EIGHTIES."

"IT WORKED ITS WAY UP TO A DOOMSDAY CULT SOUTH OF L.A. THE FOVOS."

"OUR MAN INSIDE CONFIRMED THIS."

"JUST BEFORE HE WAS MURDERED."

"FROM THERE? IT DISAPPEARED."

