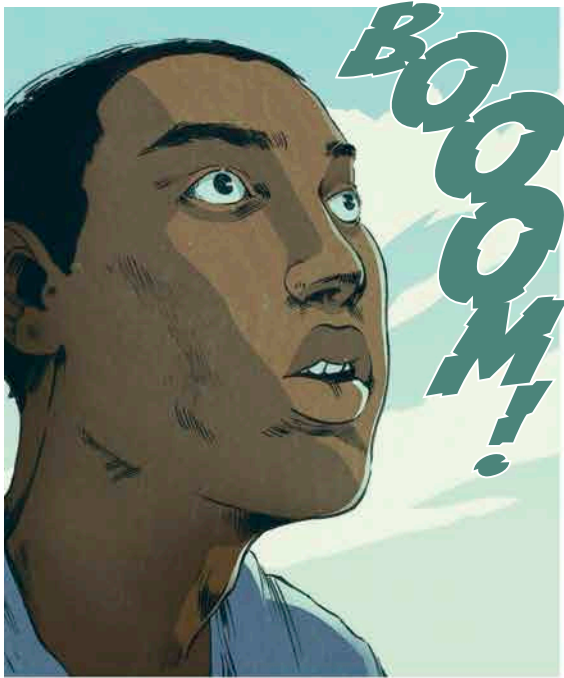




CONVERT™

JOHN ARCUDI
SAVANNAH FINLEY
MIGUEL CO
MICHAEL HEISLER







CAPTAIN?
DIETRICH?

"LANDER?
CARSON...
--YOU READY?"



"CARMELA, DIETRICH?
NANCY... --DOES
ANY...



"...
LOSING SIG
..."



"LANG...
DO YOU
..."



.....



1691/50/10
CATASTROPHIC FAILURE OF LANDER
ENGINE, CAUSE UNKNOWN. SC. OFC.
ORRIN KUTELA ONLY SURVIVOR.
CAPT. CARMELA CASAPIACE,
EG. OFC. DIETRICH VERTRAUEN,
OFC. NANCY TASSE ALL DEAD.

CAPT. AND OFC.'S
REMAINS ARE
LOCATED AT
N 92.807381
W 83.666036.



1691/50/24
THE COMMAND
ORBITER HAS NO
WAY TO REACH
THE SURFACE.

IF RETRIEVAL
IS ATTEMPTED,
POTENTIAL SUCCESS
WOULD BE APP. 331
MONTHS FROM DATE
OF EXPLOSION.



THE BENEFIT OF REMAINING AT
THE LANDER'S CO-ORDINATES
IS FURTHER DIMINISHED BY
THE FACT THAT K.U.-RATIONS
RAN OUT YESTERDAY.

ON A PERSONAL
NOTE, I'VE
NEVER FIRED A
GUN IN MY LIFE.



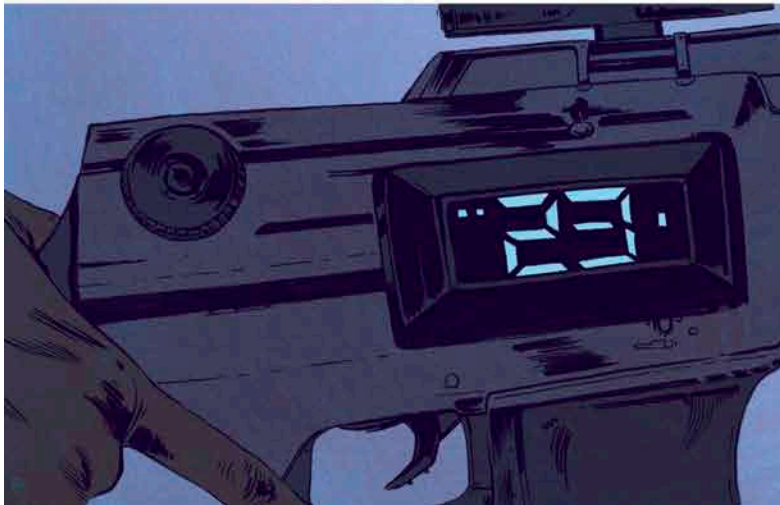
1691/60/09
THE BIRDS AND FISH
ARE TOO FAST FOR ME.
OR PERHAPS ANOTHER
DYNAMIC IS AT WORK.



LARGER LAND
ANIMALS HAVE
LEFT SPOOR, BUT
DIRECT VISUAL
CONFIRMATION
WAS NOT MADE
UNTIL TODAY.



LARGER THAN A DOG.
SMELLED OF AMMONIA
AND RAT DROPPINGS.



A MORE DETAILED
DESCRIPTION IS
DIFFICULT TO MAKE.